



ZUCKS

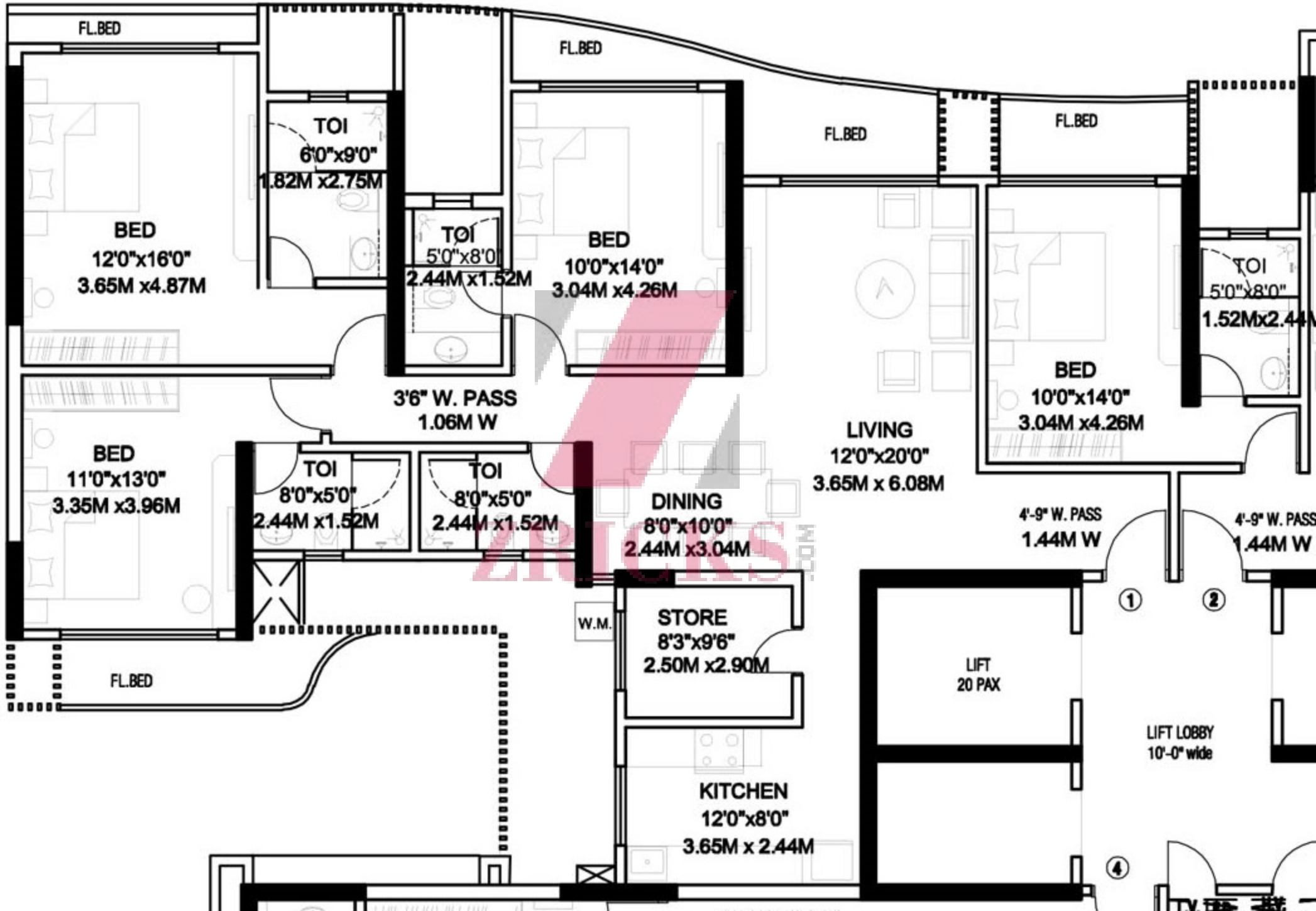


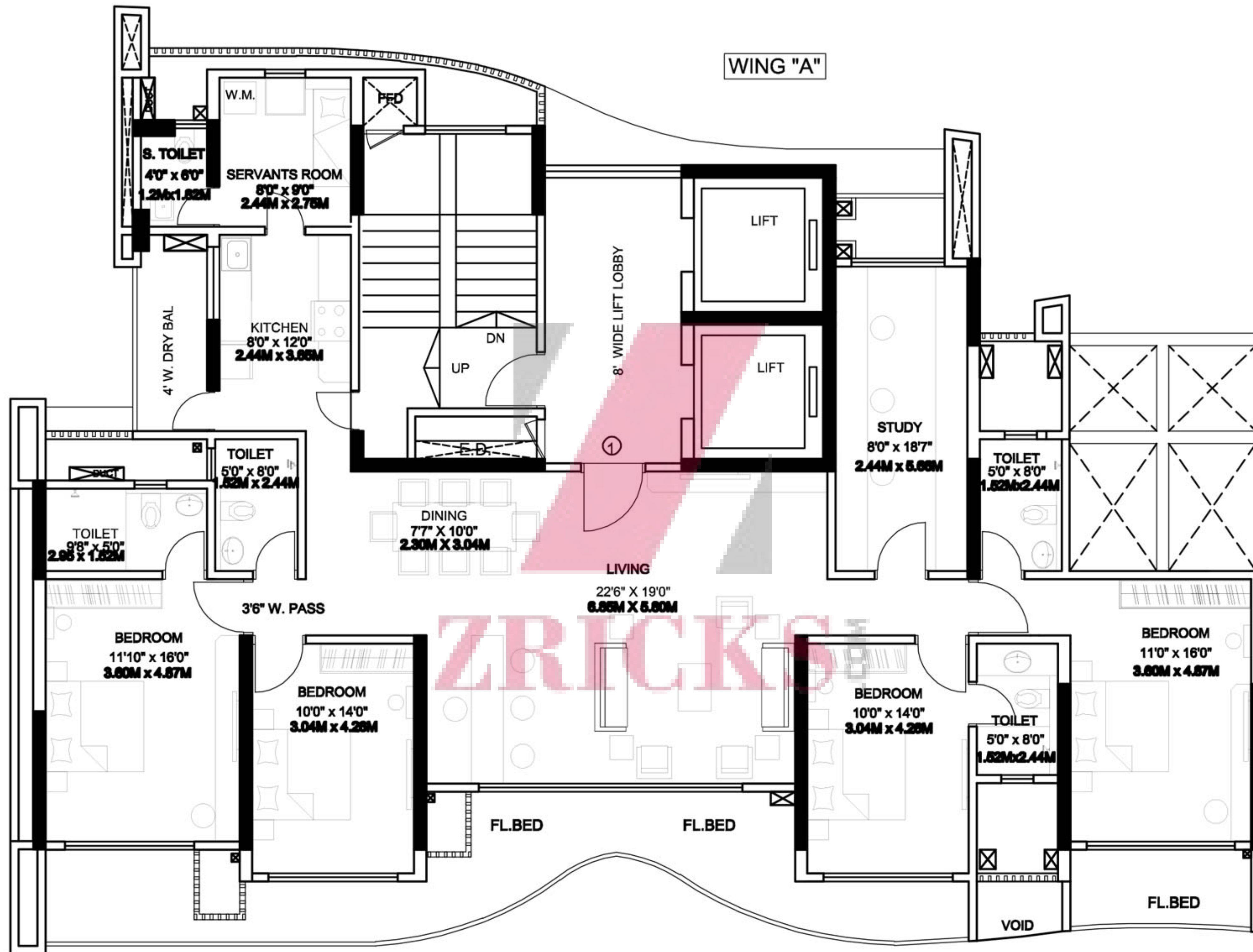








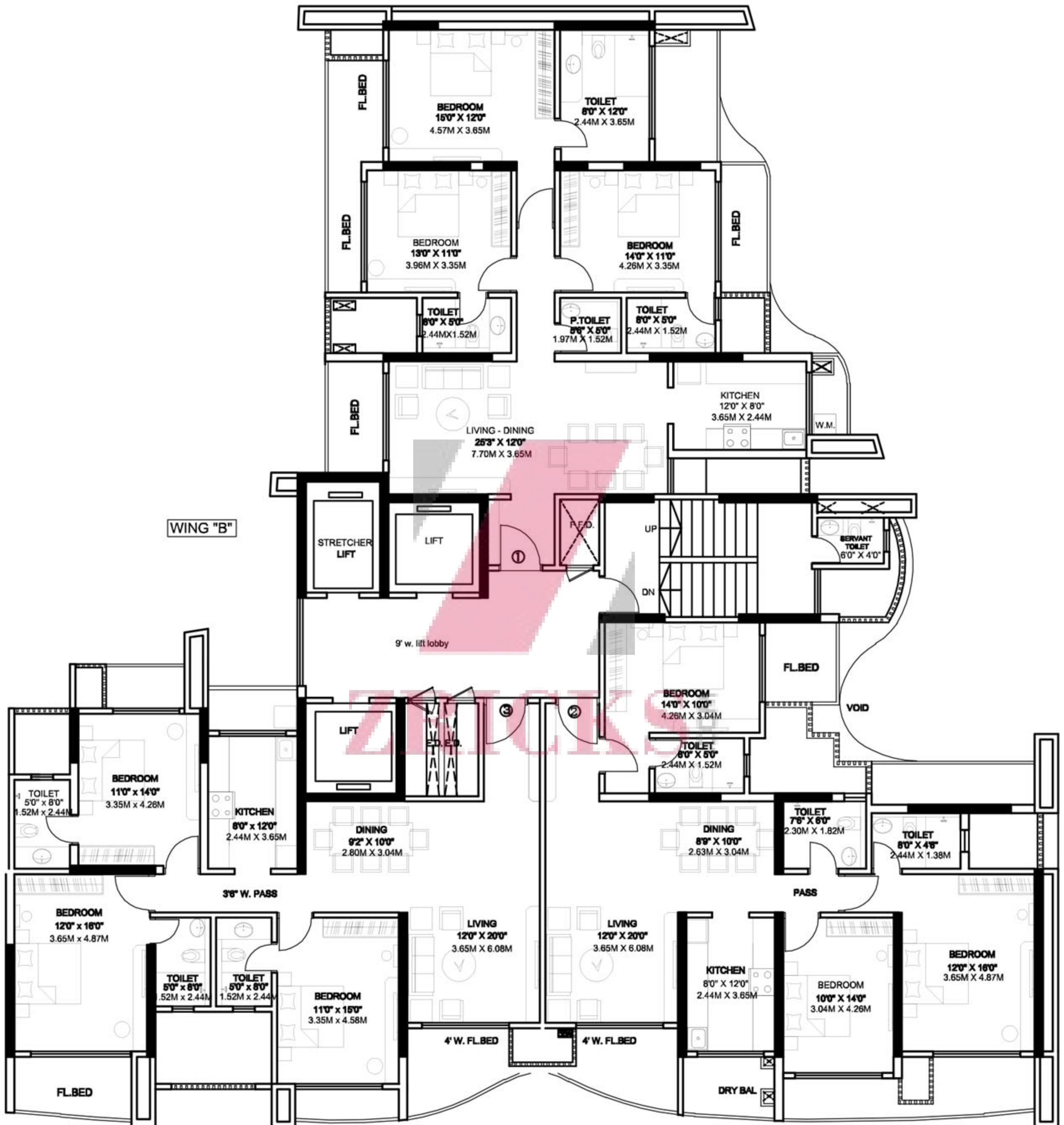




TYPICAL FLOOR PLAN (2ND TO 5TH AND 7TH TO 13TH)- 'A' WING

Disclaimer: Subject to approval of the authorities or in interest of the continuing improvement, the promoters/developers reserve the right to change the plans, specifications or features without prior notice or obligation. Tolerance of +/-3% is possible in the unit areas on account of design and construction variance.

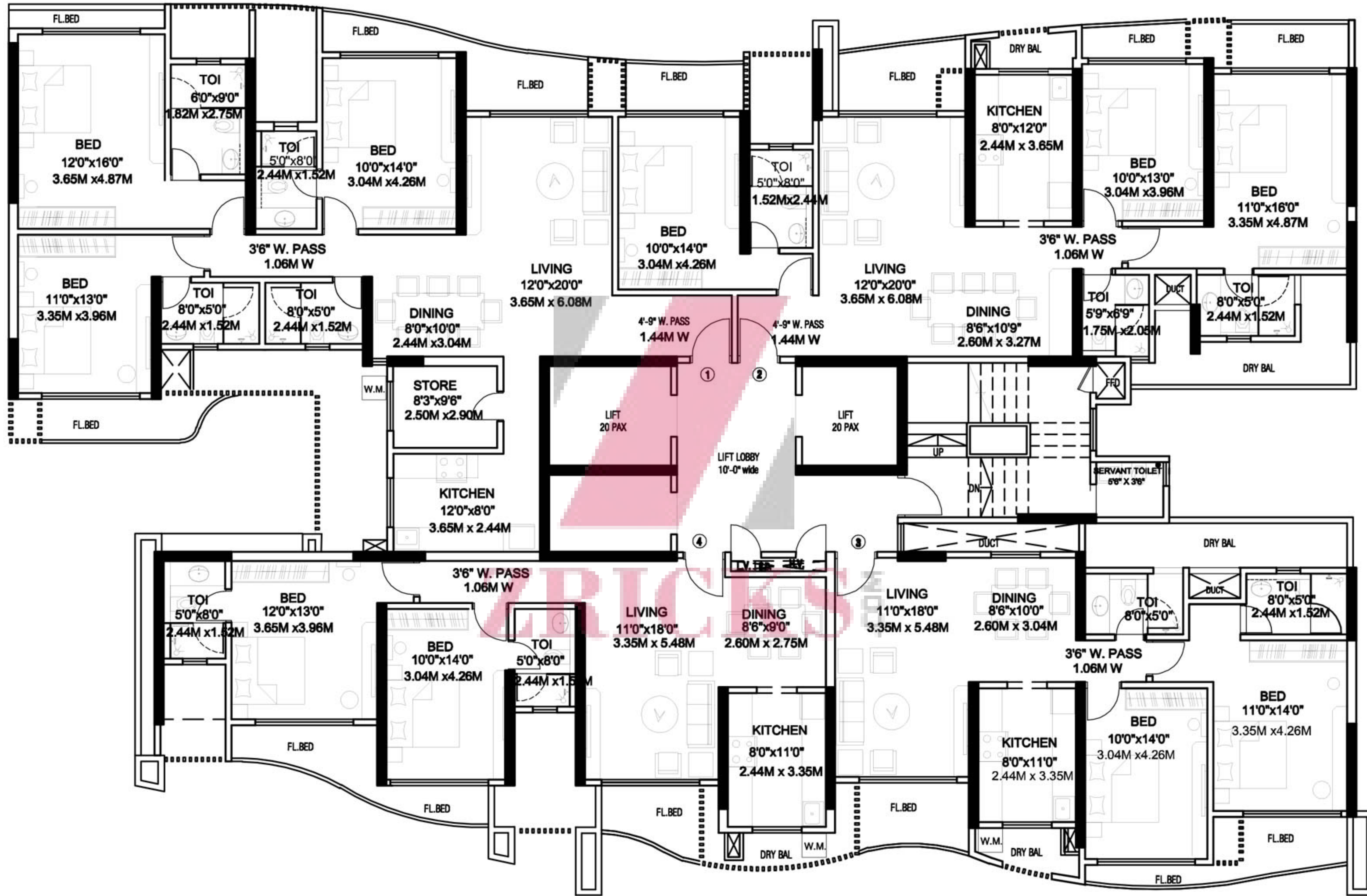




TYPICAL FLOOR PLAN (2ND TO 5TH AND 7TH TO 13TH) - 'B' WING

Disclaimer: Subject to approval of the authorities or in interest of the continuing improvement, the promoters/developers reserve the right to change the plans, specifications or features without prior notice or obligation. Tolerance of +/- 3% is possible in the unit areas on account of design and construction variance.





**TYPICAL FLOOR PLAN
(2ND TO 5TH AND 7TH TO 13TH) - 'D' WING**

Disclaimer: Subject to approval of the authorities or in interest of the continuing improvement, the promoters/developers reserve the right to change the plans, specifications or features without prior notice or obligation. Tolerance of +/- 3% is possible in the unit areas on account of design and construction variance.



ELITA UPPER JUHU

A PROJECT JOINTLY DEVELOPED BY

